

**START
HERE!**

B⁵⁰

Instructions for use. Sampling kit 2 x 50µl.

For research use only, not for
use in diagnostic procedures.

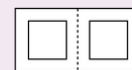
Capitainer®

INCLUDED IN THE SAMPLING KIT.

Single use products.



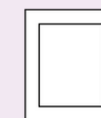
(a)
Capitainer® B 50
sampling card



(b)
Disinfectant
pad (x2)



(c)
Disposable
lancet (x2)



(d)
Non-adhesive
pad



(e)
Plaster (x2)



(f)
Capitainer®
drying pouch

Additional items you will need:

- A sample ID provided by your kit provider
- Instructions for how to return your sample to the laboratory

01

PREPARE

1



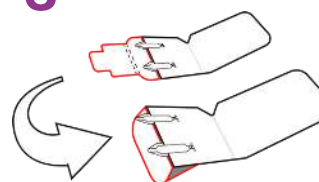
- Read entire instruction before you start
- Scan QR code or enter <https://capitainerb50.com/how-to-use> to access video instructions

2



- Choose a place where you can stand comfortably – preferably a dining table. If you prefer to sit, a coffee table works well
- Place all material on table
- Open all packages

3



- Open lid of sampling card (a)
- Fold protective tab back and secure it in slit on backside of card to create a stand
- Place card on table so inlets are elevated
- Choose a hand to sample from

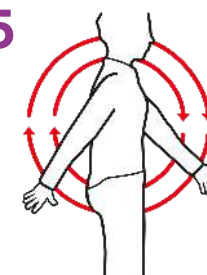
4



- Warm your hand for 2-3 mins using a method of choice
- Wash hands with soap and warm water. Dry fully with a clean towel

! Cold hands cause unsuccessful sampling!

5



- Swing your arms to increase blood circulation
- During sampling, keep hand positioned below your elbow

→ Continue on page two

Warm hands are critical for successful sampling.

You can for example:

- Take a shower
- Exercise
- Hold a cup with hot drink for 1-2 mins
- Soak your hand in warm water

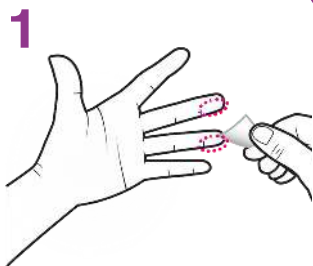
02

SAMPLE

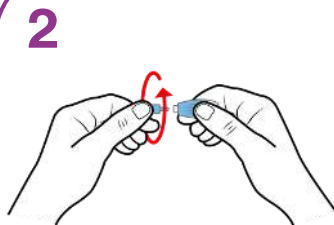


Warnings and cautions

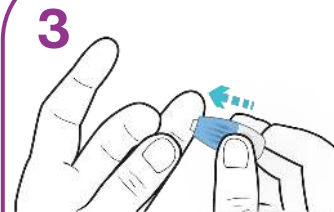
- Do not touch the sample inlets before sampling
- Use the card within 30 minutes of opening the package
- Do not bend or twist the card



- Choose a finger to prick: middle or ring finger
- Disinfect with disinfectant pad (b) and allow to dry for 15 seconds

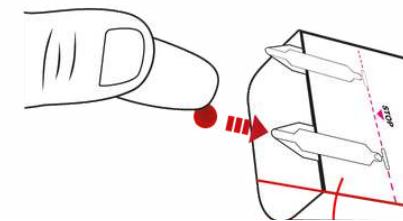


- Twist off and discard lancet (c) cap. DO NOT PULL
- Gently press your thumb against chosen fingertip to fill it with blood



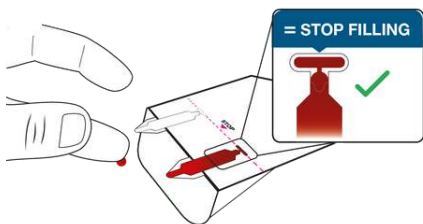
- Place lancet (c) against side of fingertip and press firmly
- Lancet (c) activates automatically and retracts into device

4 Important step, read carefully!

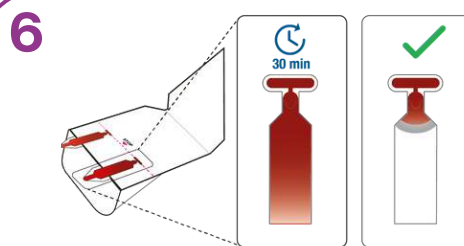


- Release pressure on fingertip and wait for blood to appear
- Wipe off first drop with the non-adhesive pad (d)
- Let a new large drop of blood form
- Approach inlet from side and touch it with the blood drop
- Make sure blood enters into channel and not on top of it

5 Important step, read carefully!



- **Add** blood **until** it reaches stop line
- Remove finger from inlet and stop filling
- Do **not** reapply more blood. It may result in an incorrect sample



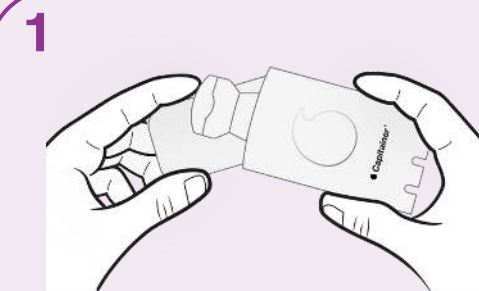
- Repeat steps 4 and 5 on the **second** channel
- Stop bleeding with non-adhesive pad (d)
- Apply plaster (e)

NOTE: After sample application, leave the card on table. After 30 min, observe that channels are emptied into the card and only the control window is filled with blood as shown.

03

PACK & RETURN

All used materials such as cards, lancets, gauzes, swabs with blood residues must be handled and disposed of safely and in accordance with local regulations.



- Label your sampling card
- Unfold stand and remove adhesive seal
- Secure protective tab over sample inlets
- Place sampling card with lid closed in drying pouch (f)
- Return sample as directed by your test provider