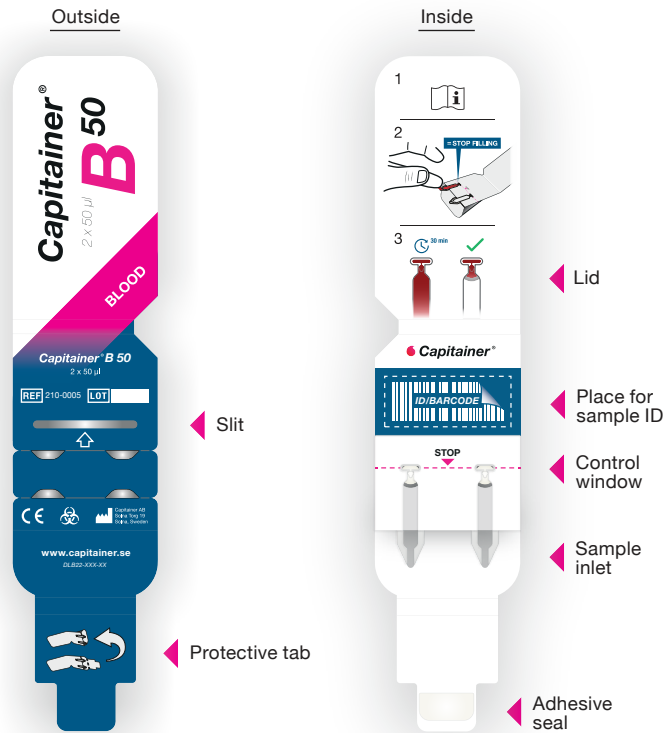


# B50

## Capitainer® B 50

### INSTRUCTIONS FOR USE

Sample retriever. Applies to article number:  
210-0005 one unit, 210-0025 25 units  
www.capitainer.com



#### Product specifications

**Sample volume:**  
50µl per sample channel.

**Material:**  
PET film, PVA film, Paper, Ahlstrom grade 320 sample discs.

**Reproducibility:**  
CV < 2%.

**Outliers:**  
Probability of overfilling or underfilling (deviation > 3 SD) < 1%. Risk of no sample: < 3%.

**Use:**  
Temperature: 15°C to 35°C. Relative humidity: 15% to 90%. Hematocrit: 25% to 55%.

**Storage:**  
Temperature: 15°C to 28°C. Relative humidity: 10% to 90%. Avoid direct sunlight and moisture.

**Shipping conditions:**  
Temperature: -10°C to 40°C\*  
\*Tested with modified ISTA 7D 2007.

**Sample storage:**  
The guidelines for blood sample storage are analyte dependent and should be validated by the examining laboratory.

#### Start ▶ Read the entire instruction before use!

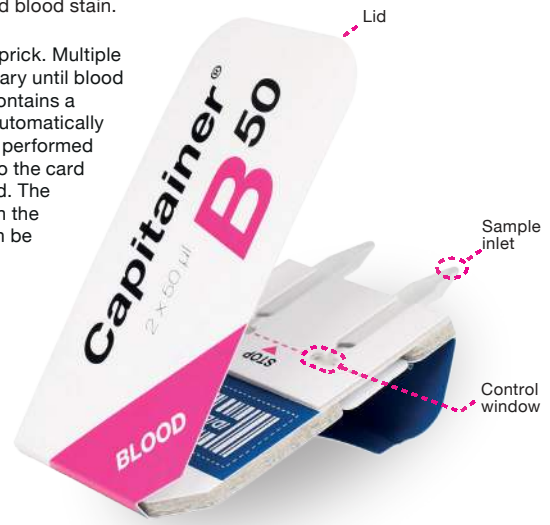
**Intended purpose:**  
Capitainer® B 50 sampling card is used to collect and store a specific volume of blood as a dried blood stain.

**Introduction:**  
A blood sample is taken through a finger prick. Multiple drops of blood can be added to the capillary until blood reaches the stop line. The channel now contains a volume of 50µl of whole blood, which is automatically transferred to a sample disc. Sampling is performed correctly when the capillaries empties into the card and the control window is filled with blood. The lid is closed and the card is then placed in the associated drying pouch. The sample can be dried during transport to the laboratory where it is analyzed.

**Provided by Capitainer:**  
(a) Capitainer® B 50 Sampling card,  
(f) Capitainer® Drying pouch\*

**Recommended materials, not provided by Capitainer:**  
(b) disinfectant swab, (c) disposable lancet\*\*, (d) gauze, (e) adhesive bandage, (g) sample ID

\*Purchased separately.  
\*\*Use a contact-activated lancet with a wide (1.5mm) and deep (2mm) cut to obtain sufficient blood without squeezing.



Symbol	Explanation
	Read the enclosed instruction manual before use.
	Attention: Read the warnings and caution instructions in the instruction manual.
	Legal Manufacturer.
	The label shows that the product meets the requirements of IVD Regulation (EU) 2017/746.
	This product is intended for in vitro diagnostics.
	BATCH/Batch number.
	The product is intended for single use only.
	Product code.
	Expiration date (YYMMDD).
	Indicates the appropriate temperature range for storage. Degrees Celsius.
	Do not use if the packaging is damaged.
	Indicates that there is a risk of biological contamination.
	Use the card within 30 minutes of opening the package.
	Do not bend or twist the card.
	Number of articles.
	Blood sampling.
	Place for sample ID.
	Quantitative blood sampling card 2 x 50µl.

#### Warnings and cautions ⚠

- Note that several drops of blood can be applied per capillary until the stop line is reached. Applying more drops after reaching the stop line increases the likelihood of an incorrect sample.
- Use the card within 30 minutes of opening the package.
- Do not touch the sample inlets before sampling.
- Check that the date of expiration has not passed.
- Do not bend or twist the card.
- When removing the card from the package, handle it with clean hands.
- The product is only validated for use with fresh blood.
- The card is intended for indoor use only.
- Do not use at temperature or humidity outside specified range.
- Do not hold the sampling card vertical during sample collection this may lead to an incorrect sample, keep the card in the standing position.
- Do not apply blood on top of the channel, approach the channel sideways.
- Observe general precautions for blood sampling and handling of potentially infected blood.
- All used materials such as cards, lancets, gauzes, swabs with blood residues must be handled and disposed of safely and in accordance with local regulations.
- Any serious incident that has occurred in relation to the medical device should be reported to Capitainer AB and the competent authority of the Member State in which the user and/or the patient is established.



# Instruction for sampling

1

- Read the entire instruction before you start!
- Open all packages.
- Place all the material on a table.
- Mark the sampling card with sample ID (g).



(a) Capitainer® B 50 sampling card



(b) Disinfectant swab



(c) Disposable lancet



(d) Gauze



(e) Adhesive bandage



(f) Capitainer® Drying pouch

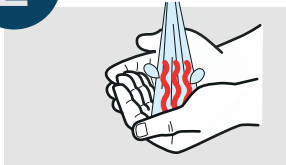


(g) Sample ID



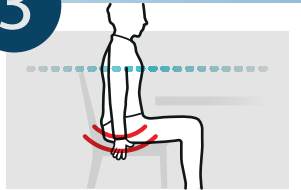
Use the QR code for instructional videos

2



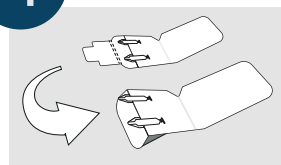
Wash your hands with soap and **warm** water. A clean and **warm** hand is crucial for easy sampling.

3



Sit down and allow your hands to hang at your sides. Shake them to increase blood circulation. Always keep your hands below your heart.

4



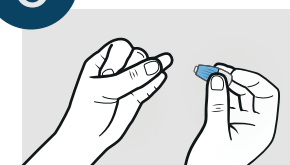
Open the lid of the sampling card (a) Fold the protective tab back and secure it in the slit on the backside of the card to create a stand. Place the card on a table so the inlets are elevated.

5



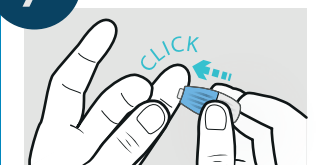
Choose a finger to prick, middle or ring finger. Then disinfect by wiping your finger with disinfectant swab (b) and allow to dry for 15 seconds.

6



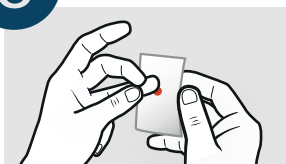
Remove the protective cover of the lancet (c) Gently press with your thumb to fill the fingertip with blood.

7



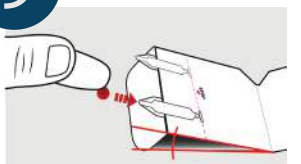
Prick the side of your fingertip by an assertive pressure to activate the lancet (c).

8



Release the pressure on the fingertip and wait a few seconds for the blood to appear. Wipe off the first drop with the gauze (d).

9



**Important step, read carefully!** Position the card on a table.

Let a **large drop** of blood form. Approach the inlet from the side and touch the inlet with the blood drop. Make sure the blood enters into the channel and not on top of the channel.

10



**Important step, read carefully!** **Continue** application of blood drops **until** blood reaches the stop line. Remove the finger from the inlet and stop filling.

Do **not** reapply more blood. Applying more blood may result in an incorrect sample.

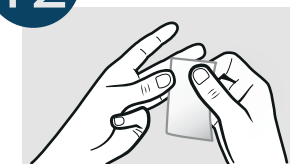
11



Repeat step 9 and 10 for sample application on the **second** channel.

**NOTE:** After sample application leave the card on the table. After 30 minutes observe that the capillaries are emptied into the card and only the control window is filled with blood as shown.

12



Stop the bleeding with the gauze (d). Apply the adhesive bandage (e).

13



If sampling is successful, ensure that the sample ID (g) is in the designated place. Unfold the stand and secure the protective tab with the adhesive seal in its original position. Close the lid and place the sampling card in the drying pouch (f). Return to the laboratory.